

SLICED COUPLING

# ASK MODEL



## Specifications (aluminium alloy)

Model	Type		Rated torque [N-m]	Maximum torque [N-m]	Permitted misalignment			Torsional stiffness [N-m/rad]	Moment of inertia [kg-m <sup>2</sup> ]	Mass [kg]
	BB (Clamping)	BBH (Removable clamping)			Lateral [mm]	Angular [°]	Axial [mm]			
ASK 018	●	-	1	2	0.15	0.5	0.2	103	0.45 × 10 <sup>-6</sup>	0.008
ASK 020	●	-	1.5	3	0.1	1	0.1	407	1.05 × 10 <sup>-6</sup>	0.017
ASK 025	●	-	3	6	0.1	1	0.1	533	2.39 × 10 <sup>-6</sup>	0.024
ASK 030	●	●	4	8	0.1	0.85	0.1	868	6.80 × 10 <sup>-6</sup>	0.049
ASK 040	●	●	9	18	0.15	0.85	0.1	3767	27.9 × 10 <sup>-6</sup>	0.110
ASK 050	●	●	15	30	0.15	0.7	0.1	7196	89.7 × 10 <sup>-6</sup>	0.210
ASK 060	●	●	32	65	0.15	0.7	0.15	12750	253.7 × 10 <sup>-6</sup>	0.420
ASK 070	●	●	60	120	0.1	0.33	0.1	66768	506.6 × 10 <sup>-6</sup>	0.648
ASK 080	●	●	85	170	0.1	0.33	0.1	78189	962.4 × 10 <sup>-6</sup>	0.858
ASK 100	●	●	150	300	0.1	0.33	0.1	278893	2826 × 10 <sup>-6</sup>	1.632

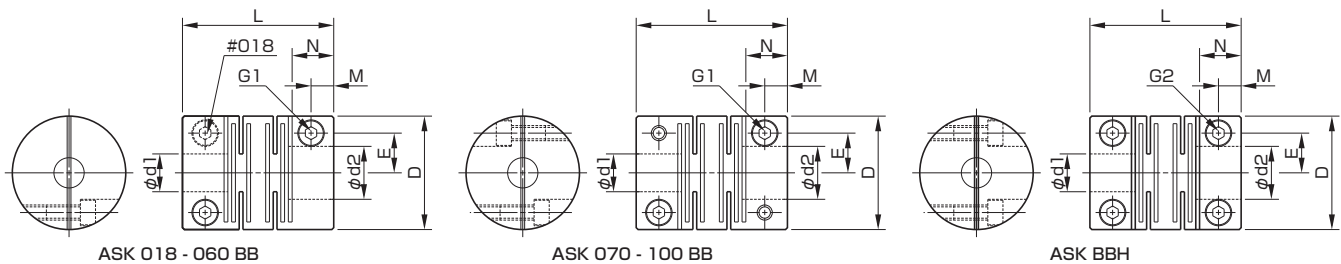
\* Maximum torque refers to the maximum amount of torque that can be applied for a set amount of time considering eight hours of operation per day and up to around ten instances.

## Specifications (steel / stainless steel)

Model	Type		Rated torque [N-m]	Maximum torque [N-m]	Permitted misalignment			Torsional stiffness [N-m/rad]	Moment of inertia [kg-m <sup>2</sup> ]	Mass [kg]
	BB (Clamping)	BBH (Removable clamping)			Lateral [mm]	Angular [°]	Axial [mm]			
ASK 020	●	-	5	10	0.1	0.5	0.1	1189	2.88 × 10 <sup>-6</sup>	0.046
ASK 025	●	-	7	14	0.1	1	0.1	1558	6.48 × 10 <sup>-6</sup>	0.064
ASK 030	●	●	9	18	0.1	0.85	0.1	2530	18.6 × 10 <sup>-6</sup>	0.134
ASK 040	●	●	15	30	0.15	0.85	0.1	11008	75.8 × 10 <sup>-6</sup>	0.300
ASK 050	●	●	30	60	0.15	0.5	0.1	20995	246 × 10 <sup>-6</sup>	0.577
ASK 060	●	●	55	110	0.15	0.5	0.1	37165	694 × 10 <sup>-6</sup>	1.150
ASK 070	●	●	95	190	0.1	0.3	0.06	196024	1380 × 10 <sup>-6</sup>	1.753
ASK 080	●	●	120	240	0.06	0.3	0.06	229524	2620 × 10 <sup>-6</sup>	2.330
ASK 100	●	-	200	400	0.06	0.3	0.06	821288	7680 × 10 <sup>-6</sup>	4.423

\* Maximum torque refers to the maximum amount of torque that can be applied for a set amount of time considering eight hours of operation per day and up to around ten instances.

## Dimensions



Model	D [mm]	L [mm]	M [mm]	N [mm]	E [mm]	d1 H7 [mm]	d2 H7 [mm]	d1 Pre-drilled [mm]	d2 Pre-drilled [mm]	G1 Qty - nominal dia.	G2 Qty - nominal dia.	Fastening torque of screw [N-m]
ASK 018	18	21	3.5	7	5.5	3-6	3-6	2.5	2.5	2-M2.5	-	1.0
ASK 020	20	28	4	8	6.5	4-8	4-8	2.5	2.5	2-M2.5	-	1.0
ASK 025	25	28	4	8	9	6-12	6-12	3.5	3.5	2-M3	-	1.5
ASK 030	30	40	5.5	11	10.5	6-14	6-14	5.5	5.5	2-M4	4-M4	3.4
ASK 040	40	48	5.5	11	14	8-19	8-19	5.5	5.5	2-M5	4-M5	7.0
ASK 050	50	65	9.5	19	18.5	12-26	12-26	8.5	8.5	2-M6	4-M6	14
ASK 060	60	80	12.5	25	21	14-28	14-28	8.5	8.5	2-M8	4-M8	27
ASK 070	70	95	12.5	25	25	20-35	20-35	18.5	18.5	4-M8	4-M8	27
ASK 080	80	100	12.5	25	29	25-42	25-42	23.5	23.5	4-M8	4-M8	27
ASK 100	100	118	15	30	37	30-55	30-55	28.5	28.5	4-M10	4-M10	54

Order example

ASK 030 BB 10H7/12H7 AL

